

**NEW!**



# Industrial Silicone Nanomount™ Vibration Isolators

We make it *possible*



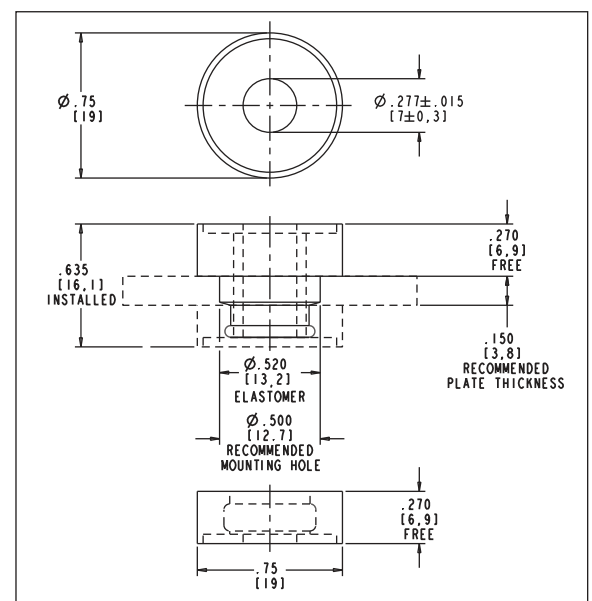
## DESCRIPTION & CHARACTERISTICS:

The Industrial Silicone Nanomount™ is a compact and rugged vibration isolator that is ideal for lightweight applications and small payloads to protect them from the damaging effects of vibration and shock. It offers performance and durability in a low profile, failsafe design. Perfect for installations where packaging space is at a premium.

- » Natural Frequency: 20 Hz at rated load, axial
- » Load Ratings: 16 lbs to 64 lbs
- » Axial to Radial Stiffness Ratio: 1:1.75
- » Failsafe integral washers eliminate the need for separate washers and reduce component count
- » Standard materials:
  - » Metal components: Steel
  - » Elastomer: Industrial Silicone
- » M6 or 1/4" fasteners
- » Support plates ranging from .125" to .188" thick
- » Snap lock feature retains isolator during assembly
- » All-attitude mounting
- » Operating temperature range:
  - » Industrial Silicone: -67°F to +300°F (-55°C to +150°C)
  - ».125" to .188" thick



## DIMENSIONS:



Phone: 508-417-7000 | Email: sales.hopkinton@hutchinsoninc.com | www.hutchinsonai.com

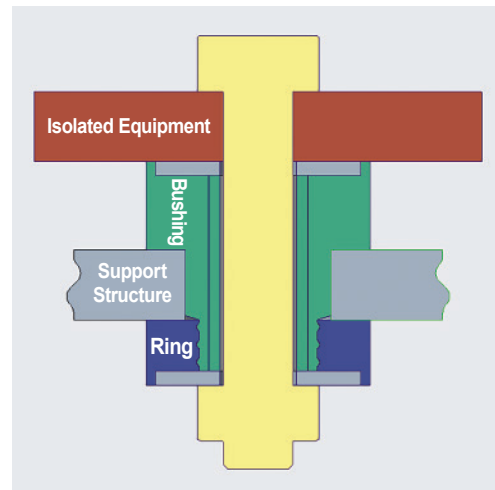
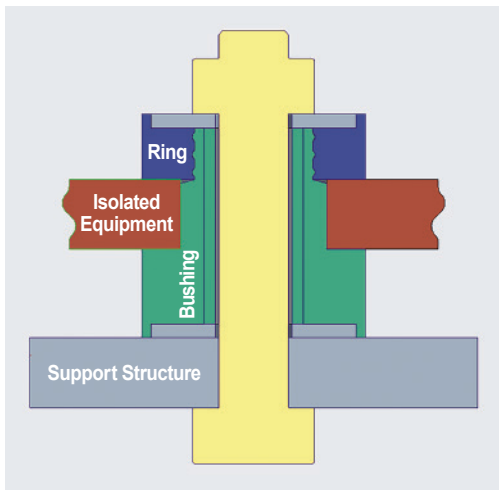
CMMC Level 2 Certified  
IATF 16949 Certified  
ISO 9001: 2015 Certified  
ISO 14001: 2015 Certified  
AS9100D Certified  
ISO 50001:2018 Certified  
Cage Code: 81860

# Industrial Silicone Nanomount™

## Specifications & Ordering Information

Part Number	Elastomer Material	Durometer (reference)	Color Code (elastomer color)	Rated Load Axial (max)*		Rated Load Radial (max)*	
				lbs.	[kg]	lbs.	[kg]
32368-36	Industrial Silicone	35	Red	16	[7.3]	4	[1.8]
32368-37		45	Yellow	24	[10.9]	6	[2.7]
32368-38		55	Green	36	[16.4]	9	[4.1]
32368-39		65	Blue	48	[21.8]	12	[5.5]
32368-40		75	Purple	64	[29.1]	16	[7.3]

\* Rated Loads listed are for installations using recommended 0.150" thick support plate. For optional 0.125" thick support plate, rated loads should be reduced by 50%. For optional 0.188" thick support plate, rated loads can be increased by 25%.



### SPECIFICATIONS:

Bolt Size	Grade or Class	Maximum Recommended Tightening Torque			
		Dry		Plated / Lubricated	
		lb - in	[N-m]	lb - in	[N-m]
1/4 – 20	5	102	[11.5]	76	[8.6]
1/4 – 28	5	116	[13.1]	87	[9.8]
M6 x 1.0	8.8	93	[10.5]	70	[7.9]