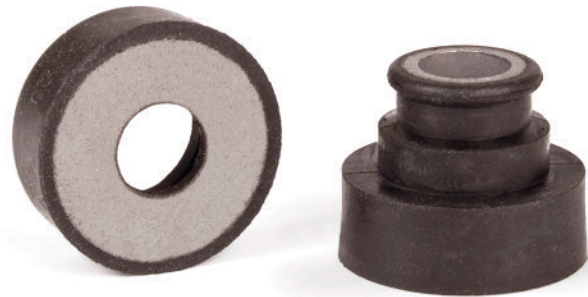


# Nanomount™ Vibration Isolators

We make it **possible**

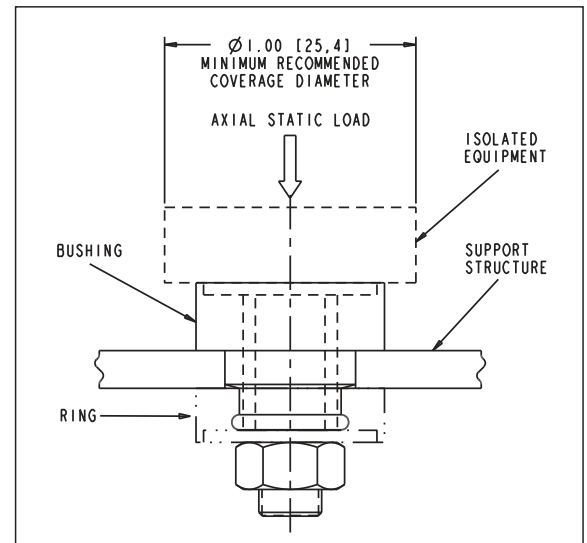
## 32368 Series



### DESCRIPTION & CHARACTERISTICS:

Simple, compact, and rugged vibration isolators are **ideal for lightweight applications and small payloads**. Nanomount™ offers performance and durability in a low profile geometry with fail-safe construction. Suitable for general purpose isolation or for protecting electronic equipment such as control modules, sensors, monitors and displays from the damaging effects of vibration and shock. **Perfect for installations where packaging space is at a premium.**

- » Low profile design for ease of packaging in small installations
- » Natural Frequency: 20 – 40 Hz
- » Load Ratings: 4 – 64 lbs [1.8 – 29.1 kg]
- » Axial to Radial Stiffness Ratio: 1:2
- » Fail-safe construction with integral bonded snubbing washers
- » Standard materials:
  - Metal components: Steel
  - Elastomer: Natural Rubber or Neoprene
- » Alternate materials are available for special environments or applications
- » Operating temperature range:
  - Natural Rubber: -40°F to 180°F (-40°C to 82 °C)
  - Neoprene: -20°F to 180°F (-30°C to 82 °C)
- » Designed for use with 1/4" or M6 fastener
- » Suitable for installation in support plates ranging from .125" to .188" thick



32368 with integral snubbing washers

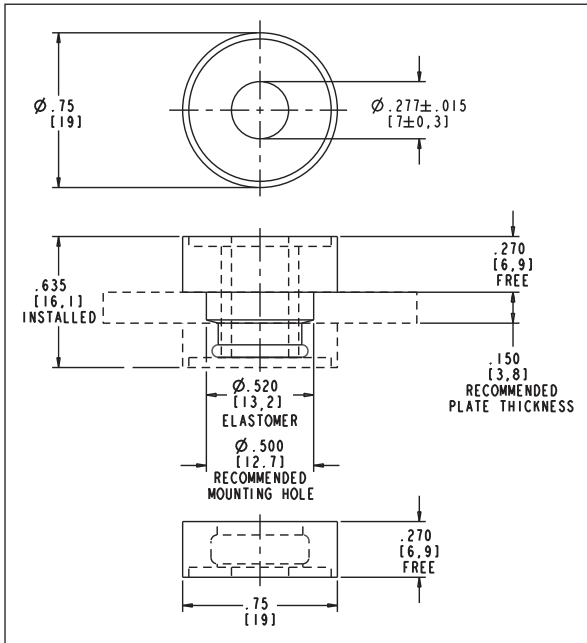
### NANOMOUNT™ ADVANTAGES:

- » **Snap lock feature holds the vibration mount together and prevents separation during assembly**
- » All-attitude mounting capability allows Nanomount™ to be installed in any orientation
- » Bonded construction improves durability and performance



# Specifications & Ordering Information

## DIMENSIONS:



## SPECIFICATIONS:

Bolt Size	Grade or Class	Maximum Recommended Tightening Torque			
		Dry		Plated / Lubricated	
		lb - in	[N-m]	lb - in	[N-m]
1/4 - 20	5	102	[11.5]	76	[8.6]
1/4 - 28	5	116	[13.1]	87	[9.8]
M6 x 1.0	8.8	93	[10.5]	70	[7.9]

## ORDERING INFORMATION:

Part Number	Elastomer Material	Durometer (reference)	Color Code (paint dot)	Rated Load Axial (max)*		Rated Load Radial (max)*	
				lbs.	[kg]	lbs.	[kg]
32368-1	Natural Rubber	35	Red	16	[7.3]	4	[1.8]
32368-2		45	Yellow	24	[10.9]	6	[2.7]
32368-3		55	Green	36	[16.4]	9	[4.1]
32368-4		65	Blue	48	[21.8]	12	[5.5]
32368-5		75	Purple	64	[29.1]	16	[7.3]
32368-11	Neoprene	35	Red & White	16	[7.3]	4	[1.8]
32368-12		45	Yellow & White	24	[10.9]	6	[2.7]
32368-13		55	Green & White	36	[16.4]	9	[4.1]
32368-14		65	Blue & White	48	[21.8]	12	[5.5]
32368-15		75	Purple & White	64	[29.1]	16	[7.3]

\* Rated Loads listed are for installations using recommended 0.150" thick support plate. For optional 0.125" thick support plate, rated loads should be reduced by 50%. For optional 0.188" thick support plate, rated loads can be increased by 25%