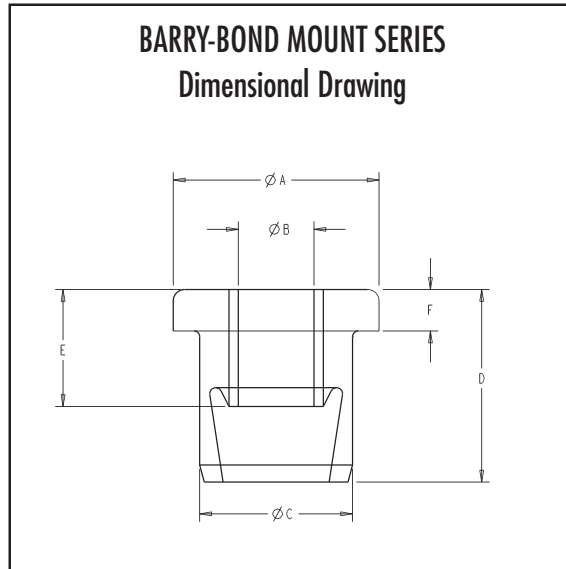


# BARRY-BOND MOUNT SERIES:

## Dimensions & Load Ranges



Part Number	Drawing Number	Maximum Axial Static Load Rating (lbs.)	Part Dimensions (inches)					
			A	B	C	D	E	F
BC-1120-1 BC-1120-3	27365	75 lbs. 125 lbs.	1.09 1.09	0.40 0.40	0.81 0.81	1.02 1.02	0.62 0.62	0.22 0.22
BC-1121-2 BC-1121-4	27366	250 lbs. 450 lbs.	1.75 1.75	0.532 0.532	1.24 1.24	1.25 1.25	1.00 1.00	0.41 0.41
BC-1122-2 BC-1122-4	27367	350 lbs. 600 lbs.	2.00 2.00	0.532 0.532	1.35 1.35	1.62 1.62	1.31 1.31	0.53 0.53
BC-1123-2 BC-1123-5	27368	500 lbs. 1,000 lbs.	2.50 2.50	0.648 0.648	1.62 1.62	2.00 2.00	1.69 1.69	0.62 0.62
BC-1124-2 BC-1124-5	27369	750 lbs. 1,400 lbs.	2.98 2.98	0.648 0.648	1.98 1.98	2.22 2.22	2.00 2.00	0.81 0.81
BC-1125-2 BC-1125-4	27370	1,400 lbs. 2,100 lbs.	3.74 3.74	0.803 0.803	2.23 2.23	2.48 2.48	2.00 2.00	1.00 1.00