

BARRY-BOND MOUNTS

Versatile, low cost elastomeric isolators protect against shock & vibration and reduce structure-borne noise in vehicular and industrial applications.

APPLICATIONS

- Engines
- Operator compartments (cabs)
- Radiators
- Pumps
- Compressors
- Machinery

FEATURES

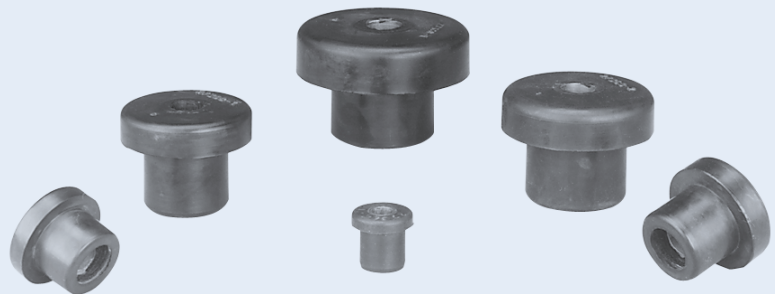
- One piece bonded construction
- Compact size
- Rebound feature formed during installation

BENEFITS

- Easy, low cost installation
- Cushioned snubbing in all directions
- Consistent performance
- Multi-directional vibration isolation
- Noise attenuation
- Fail-safe when used with recommended snubbing washers

LOAD RANGE

- Six sizes with axial load ranges from 75 to 2,100 lbs. per mount



Barry-Bond Mounts are designed for multi-directional vibration isolation, shock attenuation and noise reduction due to structure-borne vibrations. These one-piece, fail-safe mounts are easy to install and provide consistent performance.

Specifications

• Resilient Element	Natural rubber
• Standard Materials	Steel
• Weight	BC-1120-1 & 3 .02 lbs.
	BC-1121-2 & 4 .10 lbs.
	BC-1122-2 & 4 .16 lbs.
	BC-1123-2 & 5 .36 lbs.
	BC-1124-2 & 5 .56 lbs.
	BC-1125-2 & 4 .86 lbs.

Environmental Data

- Natural Rubber elastomer has an operating temperature range of -20°F to +180°F (-30°C to +82°C).