

500 MOUNT SERIES

Low-profile, high capacity mounts for vibration and shock protection.

APPLICATIONS

- Truck, bus and marine engines
- Generators
- HVAC equipment
- Electronic equipment
- Truck cabs
- Machinery, pumps & compressors

FEATURES

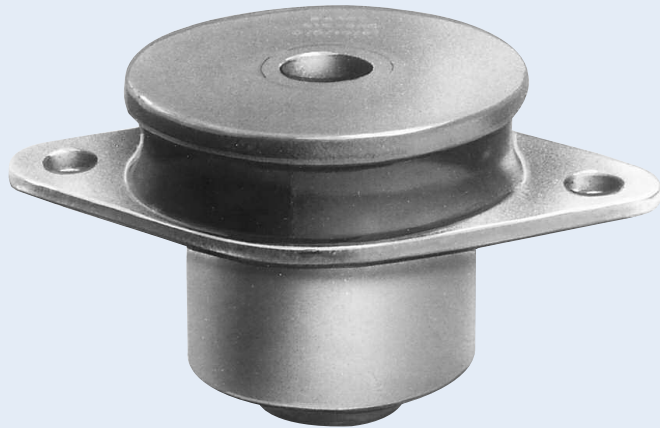
- Fail-safe when used with snubbing washer
- Axial to radial stiffness of 1:1
- Low natural frequency
- Sturdy, reliable construction

BENEFITS

- Economical
- Bonded construction provides constant performance characteristics
- Overlapping load ranges

LOAD RANGE

- 7 sizes with 31 load ratings to 1,780 lbs. per isolator



500 Series mounts are low cost isolators that provide high load carrying capacity, compact size and stability. These all attitude mounts are perfect for isolating truck, bus and marine engines.

Specifications

• Natural Frequency	8-18 Hertz
• Transmissibility at resonance	8:1
• Resilient Element	Neoprene
• Standard Materials	Sintered metal and cold-rolled steel
• Weight	See dimensional drawings

Environmental Data

- Neoprene elastomer has an operating temperature range of -20°F to +180°F (-30°C to +82°C) and is resistant to oils, most solvents and ozone.
- Special elastomers and finishes are available for applications in severe environments. Please note that Silicone elastomer is not compatible with nickel plating.

Caution: Not suitable for skid steer loaders.