

NEW!

Low Profile Conical Mounts

We make it **possible**



DESCRIPTION & CHARACTERISTICS:

Hutchinson Low Profile Conical Mounts provide excellent isolation performance in a compact package. These mounts are well suited for applications where minimal installed height is critical. Our light weight isolators are constructed of aerospace grade high-damped silicone bonded to aluminum structural components. Optimal for use in aircraft, ground vehicles and other applications.

Low Profile Conical Mounts are ideal to protect sensitive electronics such as: avionics units, navigation and guidance systems, displays, instruments, panels, controllers, sensors and other equipment.

- » Low profile mount minimizes installed height envelope
- » Natural Frequency: 19 – 43 Hz, depending upon Size and Load
- » High damped silicone elastomer
- » Maximum Transmissibility at Resonance: ≤ 4
- » Axial-to-Radial Stiffness Ratio: approximately 1 : 1
- » Rated loads up to 15 lbs
- » Light Weight:

| PART NUMBER | WEIGHT |
|-------------|--------------|
| 32083 | 0.34 oz. max |
| 32085 | 0.75 oz. max |
| 32087 | 1.60 oz. max |

- » Operating temperature range: -65°F to +300°F (-54°C to +149°C)
- » Standard Materials:
 - Center Core: 2024-T4 aluminum, conversion coated per MIL-DTL-5541, Class 1A
 - Base Plate: 2024-T351 aluminum, conversion coated per MIL-DTL-5541, Class 1A
 - Elastomer: Hutchinson Hi-Damp silicone

– See reverse side for Performance Characteristics –

Low Profile Conical Mounts

Technical Specifications

We make it **possible**

32083 Performance Characteristics: 4.5 lb. Maximum Static Load

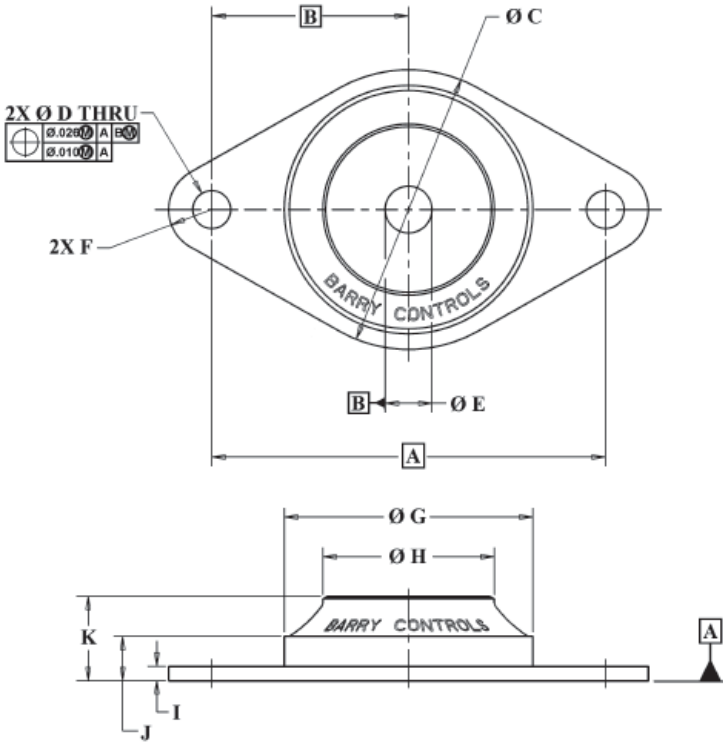
| PART NUMBER | Axial Natural Frequency* (Hz) | Dynamic Spring Rate (lbs/in) | |
|-------------|-------------------------------|------------------------------|--------|
| | | Axial | Radial |
| 32083-2 | 19 | 165 | 180 |
| 32083-3 | 20 | 185 | 200 |
| 32083-4 | 21 | 200 | 225 |
| 32083-5 | 23 | 245 | 270 |
| 32083-6 | 25 | 290 | 315 |
| 32083-7 | 26 | 310 | 340 |
| 32083-8 | 28 | 360 | 395 |
| 32083-9 | 30 | 415 | 455 |
| 32083-10 | 33 | 500 | 550 |

32085 Performance Characteristics: 6 lb. Maximum Static Load

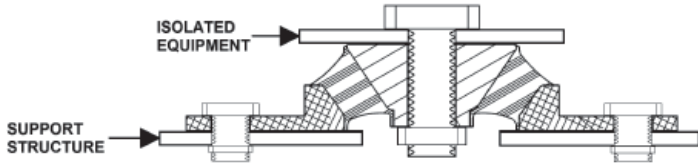
| PART NUMBER | Axial Natural Frequency* (Hz) | Dynamic Spring Rate (lbs/in) | |
|-------------|-------------------------------|------------------------------|--------|
| | | Axial | Radial |
| 32085-2 | 24 | 355 | 270 |
| 32085-3 | 26 | 415 | 320 |
| 32085-4 | 28 | 480 | 370 |
| 32085-5 | 31 | 590 | 455 |
| 32085-6 | 33 | 665 | 515 |
| 32085-7 | 35 | 750 | 575 |
| 32085-8 | 37 | 840 | 645 |
| 32085-9 | 40 | 980 | 755 |
| 32085-10 | 43 | 1130 | 870 |

32087 Performance Characteristics: 15 lb. Maximum Static Load

| PART NUMBER | Axial Natural Frequency* (Hz) | Dynamic Spring Rate (lbs/in) | |
|-------------|-------------------------------|------------------------------|--------|
| | | Axial | Radial |
| 32087-6 | 23 | 810 | 810 |
| 32087-7 | 26 | 1035 | 1035 |
| 32087-8 | 28 | 1200 | 1200 |
| 32087-9 | 31 | 1380 | 1380 |
| 32087-10 | 33 | 1570 | 1570 |
| 32087-11 | 35 | 1875 | 1875 |
| 32087-12 | 37 | 2095 | 2095 |
| 32087-13 | 40 | 2450 | 2450 |
| 32087-14 | 43 | 2830 | 2830 |



RECOMMENDED INSTALLATION



| | 32083 | 32085 | 32087 |
|-------|---------------|--------------|--------------|
| A | 1.438 | 1.950 | 2.740 |
| B | .719 | .975 | 1.370 |
| C | 1.220 ± .015 | 1.690 ± .005 | 1.950 ± .015 |
| D | .141 ± .005 | .152 ± .003 | .263 ± .003 |
| E | .195 - .200 | 8-32UNC-2B | .323 - .329 |
| F RAD | .160 ± .015 | .190 ± .015 | .300 ± .010 |
| G | 1.156 ± 0.010 | 1.495 ± .005 | 1.730 ± .015 |
| H | .500 ± .005 | .966 ± .005 | 1.193 ± .005 |
| I | .062 ± .005 | .063 ± .005 | .100 ± .005 |
| J | .187 ± .010 | .183 ± .010 | .310 ± .001 |
| K | .520 ± .015 | .500 ± .015 | .580 - .605 |

* Dimensions shown are metal to metal

* Input = .036 inch double amplitude with maximum static load

