

# LMS MOUNT SERIES

Attenuated levelers designed for leveling and aligning sensitive electronic manufacturing equipment

## APPLICATIONS

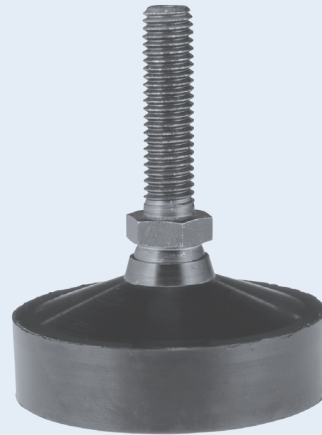
- Semiconductor equipment
- Electronic manufacturing equipment
- Industrial machinery

## FEATURES

- Neoprene elastomer bonded to steel construction
- Corrosion resistant exposed metal parts
- Proven durability
- ANSI and metric steel threads

## BENEFITS

- Non skid elastomer
- Protects floor or surface finish
- Extends machinery life
- 1/2" of elastomer for controlled deflection and attenuation



LMS attenuated levelers are designed for leveling, aligning and isolating sensitive electronic manufacturing equipment. LMS Series levelers feature over .5" of neoprene elastomer bonded to the bottom of the leveler to provide shock-attenuated, non-skid support.

## Specifications

• Natural Frequency	10-20 Hertz
• Transmissibility at resonance	8:1
• Resilient Element	Neoprene
• Standard Materials	Black Corrosion Resistant Steel
• Elastomer Color	Black

## Environmental Data

- Neoprene elastomer has an operating temperature range of -20°F to +180°F (-30°C to +82°C) and is resistant to oils, most solvents and ozone.